



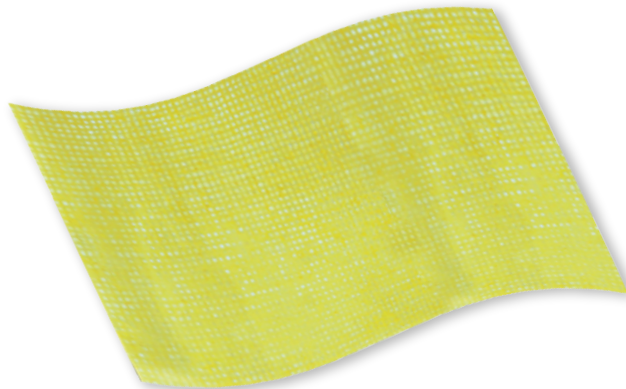
HEALQU®

The best in advanced wound care

3% Bismuth Tribromophenate & Petroleum blend gauze

Xeroform Petrolatum gauze is a type of medical dressing and has ingredients finely wovens mesh medical gauze infused with a blend of petrolatum and 3% Bismuth Tribromophenate. It is used for open wounds such as lacerations, burns, new circumcisions, today is used for breast cancer after the surgery, and surgical incisions and skin grafts. This gauze is particularly useful as a dressing because it is non-adherent, meaning it won't stick to wounds.

Xeroform Petrolatum Gauze Dressings



Usage

Intended for direct application to a wide range of wound types including:

- Minimally draining wounds
- Surgical incisions
- Lacerations
- Donor sites
- Burns



Ref #	HCPCS	Description	QTY
9021001	A6222	1" x 8" (2.5cm x 20cm)	50/800
9021002	A6222	2" x 2" (5cm x 5cm)	25/1000
9021003	A6223	4" x 4" (10cm x 10cm)	25/1000
9021004	A6266	5" x 9 (13cm x 23cm)	50/1000

For more info: 1.844.4HEALQU | www.healqu.com | info@healqu.com

INTENDED USE:

To provide an antiseptic and anti-microbial healing environment by direct application to lightly or non-exuding wounds.

INDICATIONS FOR USE:

Multiple wound types including but not limited to:

- Minor or partial thickness burns
- Surgical incisions
- Lacerations
- Donor sites



CONTRAINDICATIONS:

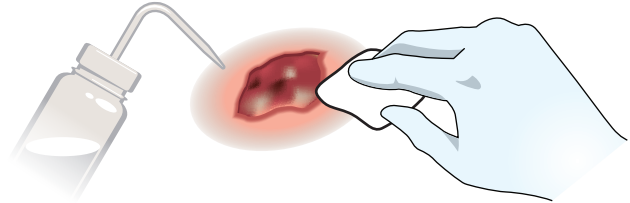
- HEALQU® Xeroform Petrolatum Dressing is considered to be non-irritating and non-sensitizing. However, it should not be used on patients with hypersensitivity to Bismuth Tribromophenate.
- This is an occlusive dressing and is not intended for use on excessively draining wounds.

WARNINGS AND PRECAUTIONS

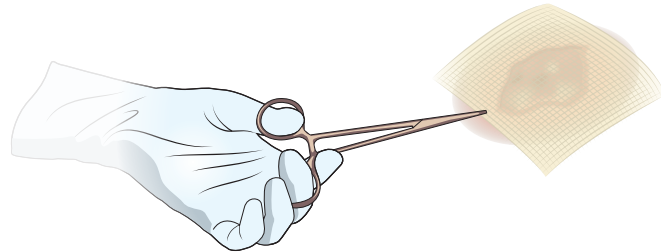
- Avoid multiple layers which may lead to maceration.
- Irritation, although rare, may develop in atopic patients or if sensitivity to Bismuth Tribromophenate exists. Discontinue use if irritation develops.
- Avoid excessive packing and the resultant pressure on the wound.

DIRECTIONS FOR USE:

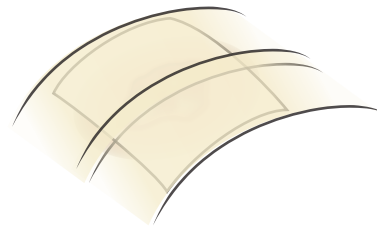
1. Clean the wound with sterile saline water and dry the surrounding skin gently.



2. Remove dressing from packaging with sterile forceps and apply a single layer of gauze directly to wound.



3. Cover and secure the HEALQU® Xeroform Petrolatum Dressing with a secondary dressing.



NOTES:

Observe the wound before removing dressing. If the wound appears dry, saturate the dressing with sterile saline water prior to removal.

Rx Only

